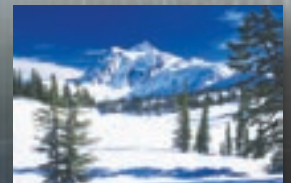


# QSS-33 SERIES



**QSS-3311**   **QSS-3312**  
Digital                      Digital

**QSS-3311**   **QSS-3312**  
DLS\*                         DLS\*

# NORITSU

# NEW FEATURES



**Writes CDs  
1.6X Faster\***

**Improved Image  
Correction Capabilities\***

**Energy Efficient**  
QSS-33 Digital Minilabs use  
approximately 10% LESS electricity\*



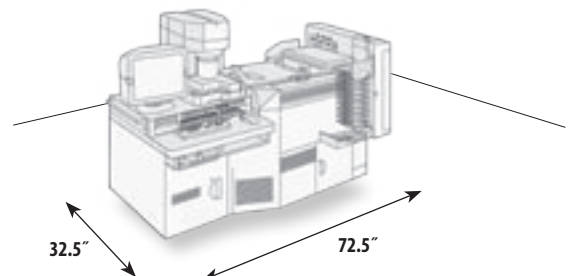
<b>QSS-3311</b>	
Estimated capacity from negative film (135/24 exp.)**	<b>▶ 900</b> prints/hr (3.5" x 5")
Estimated digital camera print capacity**	<b>▶ 900</b> prints/hr (3.5" x 5")
Maximum paper width	<b>▶ 8</b> inches
Maximum paper length	<b>▶ 14</b> inches



<b>QSS-3312</b>	
Estimated capacity from negative film (135/24 exp.)**	<b>▶ 1240</b> prints/hr (3.5" x 5")
Estimated digital camera print capacity**	<b>▶ 1240</b> prints/hr (3.5" x 5")
Maximum paper width	<b>▶ 8</b> inches
Maximum paper length	<b>▶ 14</b> inches

## Ultra Compact Design

With a footprint of just 14.42 square feet, the QSS-33 Series is the smallest digital minilab design in its class.



\*When compared to that of a QSS-3001

\*\* Calculated according to our criteria. The actual capacity you achieve may vary.

The QSS-33 Series is the perfect combination of power and size. Get high performance and award-winning Noritsu quality in a compact, small footprint minilab.



## High-Speed, High Capacity Processor

A high speed printer-processor produces quality prints of various sizes, from wallet size to 8" x 14" enlargements. Create from 900 to 1,240\* prints per hour from digital cameras or negative film with exceptional productivity and profitability.

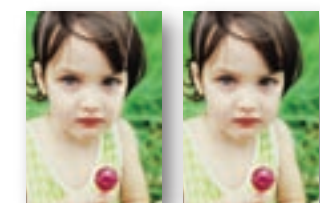
## Digital Print Services

The QSS-33 Series accepts input from a wide variety of sources including digital camera media, film and application software. Output options include prints, CD-R media and even high-margin specialty prints using photo templates and photo greeting cards.

## NORITSU IMAGE OPTIMIZATION TECHNOLOGY

The QSS-33 Series has built-in precision corrections help to assure consistent, high-quality prints that will satisfy even the most demanding customer. Enhanced image repair capabilities are available through advanced correction modules.

## Automatic Dust/Scratch Correction



### Digital Ice™ (standard) and Digital Masking (optional)

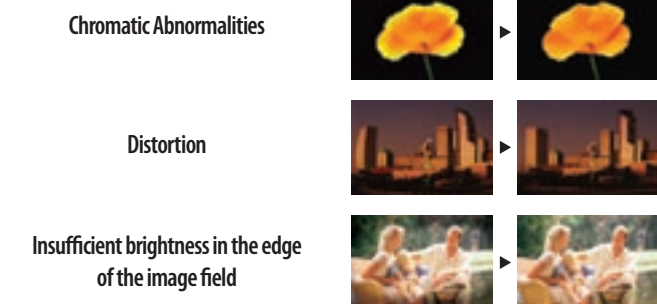
Digital Ice™ is a powerful, easy-to-use image enhancement tool. It automatically removes dust and scratches on the base layer of film, turning damaged or flawed images into beautiful,

blemish-free prints. Noritsu Digital Masking corrects for dust and deep scratches in the emulsion layer of film and is available as an option.

Digital Ice™ is a trademark of Eastman Kodak

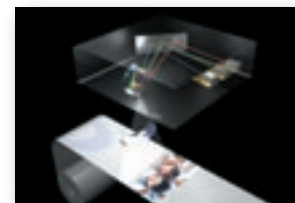
## Lens Aberration

This new feature corrects distortion, chromatic abnormalities and insufficient brightness in the edge of the image field.



## Excellent Quality

### 300 dpi High Quality Laser Exposure System



The industry's only multi-paper matching system automatically customizes each job to optimize quality and produce outstanding 300 dpi results. Whether you print from digital camera media or any other source, you'll achieve delicate gradations, sharp lines, and vivid colors.

## Additional Image Correction Tools

**BACKLIT**—The color density of each image is evaluated and brightness is adjusted accordingly.

**COLOR CHANGE**—Color images can be easily changed to Sepia or Black & White.

**COLOR CORRECTION**—Repairs color balance where an artificial light source, abnormal color temperature or film defect has compromised the image.

**GRAININESS**—The system automatically detects and compensates for grainy images.

**JPEG BLOCK**—Smooths blocking that occurs during image compression.

**RED EYE (OPTIONAL)**—Red eye is automatically detected and can be fixed automatically or manually.

**UNDER/OVER EXPOSURE**—The color, contrast, density and chroma of scanned images is analyzed and the appropriate correction is applied.

## STREAMLINED WORKFLOW

### Easy Operation



It doesn't get any easier than this. Simply click on easy-to-understand icons for virtually any digital service you want. Jobs are easier to process, productivity increases and workflow improves dramatically.



An additional customized keyboard is provided for greater printing efficiency.

### Enhanced Printing Operations



#### PRINT CHANNEL MANAGEMENT

Print channel organization has been enhanced, making it easier than ever to locate the appropriate print channel.

#### DIGITAL SCENE ADJUSTMENT

Detailed corrections can be made one image at a time if desired.

**PRE JUDGE PRINT** Images are displayed 4 or 6 frames at a time for fine tuning. Single image display is also possible.

### Economical and Efficient



Multi-paper matching automatically customizes each job to optimize quality and produce outstanding 300 dpi output. Daily setup is streamlined with no monthly or weekly setup required. Automatic washing of upper guides and easy access to internal parts means maintenance is a snap.

## Labor Saving Options

### Dual Magazine System



Adding a dual magazine system allows you to print various sizes without stopping to change cartridges.

### Auto Film Carrier



The 135/240 AFC II takes care of changing lanes by simply moving a lever, making the scanning process easier and more efficient.

### 12 Print Trays — 50 Prints per Tray

The QSS-33 order sorter sorts your customers' prints into 12 trays that hold up to 50 prints each, or you can convert it to a 10-tray system holding 82 prints/tray.



# QSS-33 SERIES

## QSS-33 SERIES SPECIFICATIONS

Exposure System:	Laser scanning exposure by paper movement
Compatible Input Media:	Standard: FD, CD-ROM, CD-R, CD-RW, CompactFlash, Microdrive, SmartMedia, PC Card, SD Card, MMC, Memory Stick, Memory Stick Pro, xD-Picture card (Adapter required) Optional: ZIP
Compatible Output Media:	Standard: FD, CD-R, CD-RW, CompactFlash, Microdrive, SmartMedia, PC Card, SD Card, MMC, Memory Stick, Memory Stick Pro, xD-Picture card (Adapter required) Optional: ZIP
Print Resolution:	300 dpi
Exposure Speed:	2.3 in/sec
Print sizes:	Paper Width: 3.25", 3.5", 4", 4.5", 4.6", 4.7", 5", 5.1", 6", 6.5", 7", 8" Paper Advance Length: 3.25" to 14"
Display Monitor:	17 inch color display monitor
Transport System:	Roller transport
Processing Speed:	64.5 in/min
Paper Supply:	Single magazine system, Dual magazine system (option)
Paper Specifications:	Maximum diameter of paper roll: 9.8"
Weight:	Scanner: Approx. 48.5 lbs. Printer-Processor: Approx. 899 lbs.    Approx. 926 lbs. (SM)
Light Source of S-2 Film Scanner:	LED Array
Film Size:	110, 135F, 135H, 135FP, 135P, IX240 (C,H,P), 120/220 (6x4.5, 6x6, 6x7, 6x8, 6x9)
Film Types:	Color negative and positive (including mounted) B&W negative, Sepia negative
Film Carrier:	135/240 AFC-II: Compatible with both 135 and IX240 negative and positive film. Lane changes performed manually. Optional: 120 AFC, 135/240 MMC, 135/240 AMC

135 negative film (24 exp.)

PRINT SIZE width x paper advance length	PROCESSING CAPACITY (PRINTS/HR)*	
	QSS-3311	QSS-3312
3.5"x 5"	Approx. 900	Approx. 1,240
4"x 6"	Approx. 900	Approx. 1,050
8"x 10"	Approx. 250	Approx. 360

IX240 negative film (25 exp.)

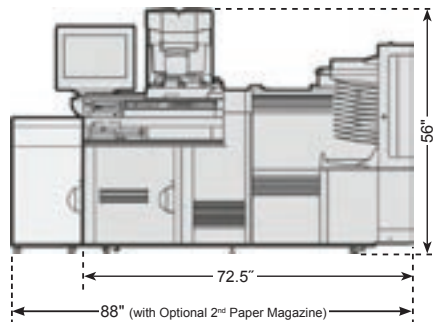
PRINT SIZE	PROCESSING CAPACITY (PRINTS/HR)*	
	QSS-3311	QSS-3312
3.5" paper width (C,H,P intermixed)	Approx. 810	Approx. 1,080

Digital Camera (2.5 megapixels)

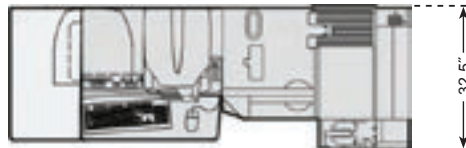
PRINT SIZE width x paper advance length	PROCESSING CAPACITY (PRINTS/HR)*	
	QSS-3311	QSS-3312
3.5"x 5"	Approx. 900	Approx. 1,240
4"x 6"	Approx. 900	Approx. 1,050
8"x 10"	Approx. 250	Approx. 360

\*The capacity of the machine varies with the process chemicals used, the condition of the negatives printed, etc. Calculated according to our criteria. The actual capacity you achieve may vary.

Specifications are subject to change without notice. QSS is a registered trademark of Noritsu.



Front Views



Top Views

• **Noritsu America Corporation:** 6900 Noritsu Avenue, Buena Park, California 90620-1372 (714) 521-9040 • **Western Regional Office:** 6950 Noritsu Avenue, Buena Park, California 90620-1311 (714) 521-9040 • **Eastern Regional Office:** 336 Route 46 East, Fairfield, New Jersey 07004-2429 (973) 808-9898 • **Midwest Regional Office:** 755 Tollgate Road, Elgin, Illinois 60123-9301 (847) 888-8000 • **Southern Regional Office:** 2989 North Stemmons Freeway, Dallas, Texas 75247-6193 (214) 631-2400 • **Latin America Regional Office:** 1800 N. Commerce Parkway, Suite 2, Weston, Florida 33326 (954) 385-3775 • **Government Sales Office:** 8000 Towers Crescent Drive, Suite 1350, Tysons Corner, Virginia 22182-2700 (703) 821-0007 • **Subsidiary; Noritsu Canada Ltd.:** 2680 Argenta Road, Mississauga, Ontario, Canada, L5N 5V4 (905) 567-8982 • **Subsidiary; Noritsu de México S.A. de C.V.:** Plaza Mayorazgo de Luyando No. 7, Col. Xoco, Delegación Benito Juárez, C.P. 03330 México, D.F. (52) 5-601-0429