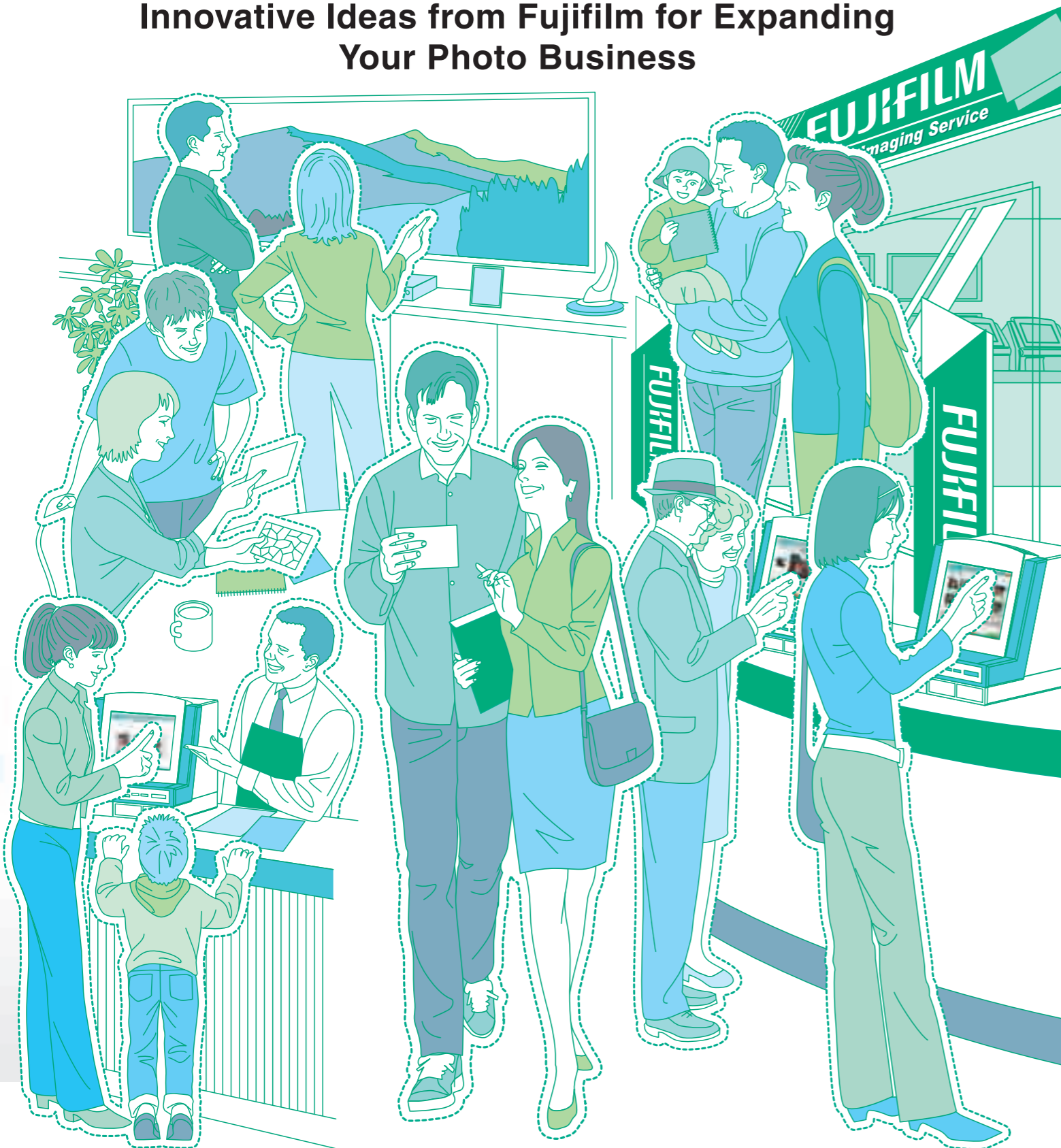


Meeting the wide-ranging needs of your Solutions can significantly boost the

More Functions! Greater Convenience!

**Expanding
Frontier Solutions**

Innovative Ideas from Fujifilm for Expanding Your Photo Business



Four Keys to Ensure Fujifilm's

1. Frontier Customer Interface

Simple and convenient

- User-friendly GUI screen: With this *easy operation*, orders will soar!
- Handles a *variety of services* to match your shop's business style!



Order terminal



Order screen



Order terminal



Film scanner



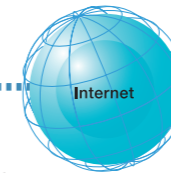
Print Kiosk



Print Kiosk



Print order via Internet



Internet

Ordering Services

2. Frontier Workflow Management

Easy to use

- Print preview operation is *easy* and requires no special skills or experience!
- Collective workflow management reduces errors and *speeds up* processing time!



Digital Imaging Controller



FUJIFILM Frontier Workflow Management Software "MS"



Preview operation



Order management screen

Fujifilm's Expanding Frontier Solutions strongly support your photo shop business with the combination of the Frontier Customer Interface, Frontier Workflow Management, Frontier Multi-Link, and Frontier Quality.

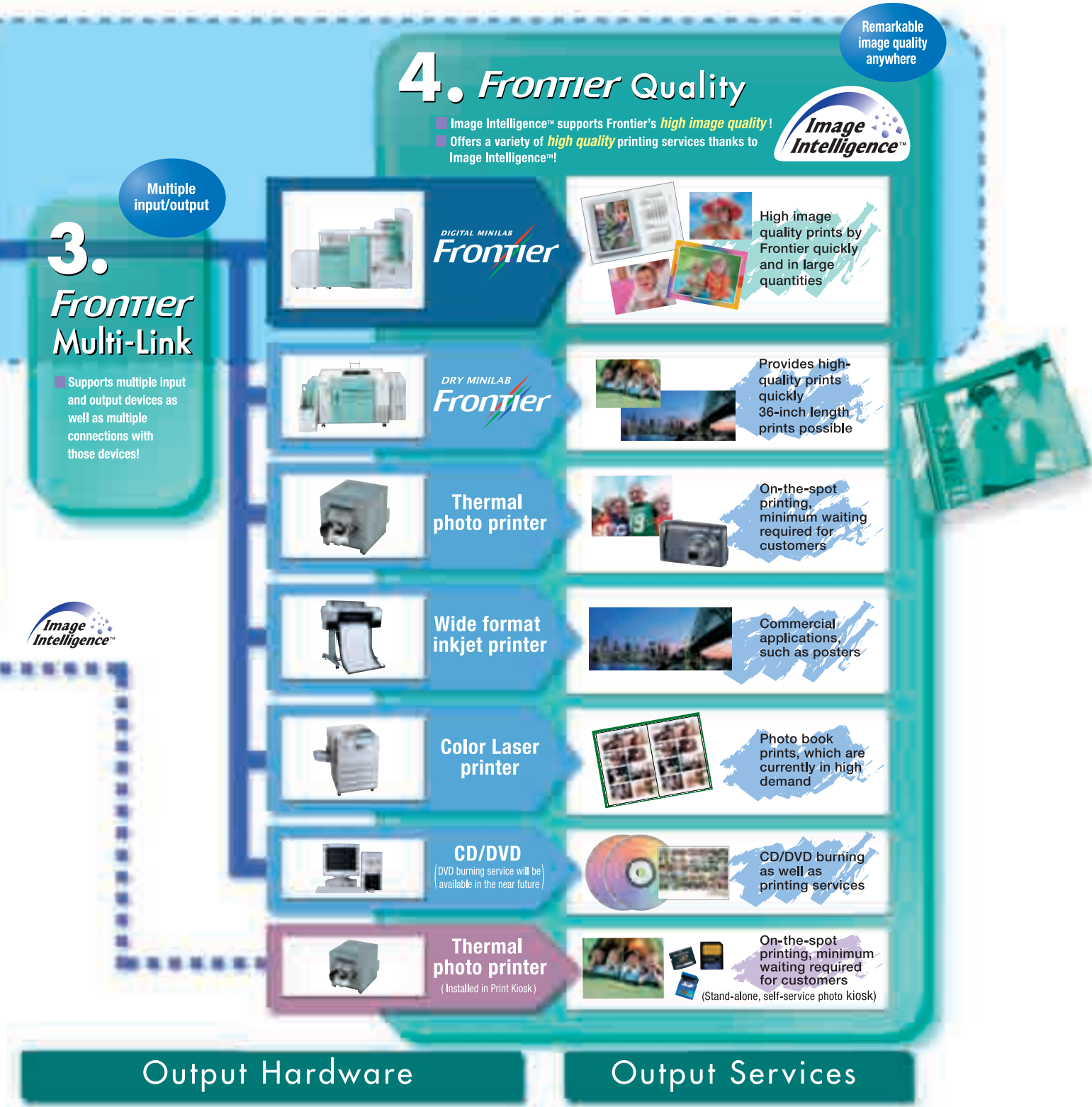
Offering various services quickly, easily, and with high image quality is the Expanding Frontier Solutions concept. Fujifilm is offering solutions well-suited to the market needs of customers who are currently using Frontier as well as those who are considering its adoption in the future.

Image Processing

Frontier Solutions

customers, Fujifilm's Expanding Frontier expansion of your photo business.

Expanding Frontier Solutions



Supporting a wide range of output devices that offer High value-added services with high image quality



Some services and products shown above are not available in certain markets.

FUJIFILM

FUJIFILM Corporation
7-3, AKASAKA 9-CHOME, MINATO-KU, TOKYO 107-0052, JAPAN

Unique technologies realize super-high image quality, superior added value, and excellent

FUJIFILM Frontier Terminal Software "TS"

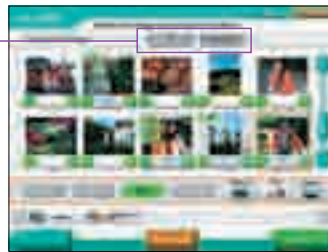


Order Terminal

Just touch the screen to order!

Ordering is easy, even for first-time customers, at the touch of a button. The screen seamlessly changes in response to their requests.

The 10-frame display for easy ordering from a large number of photos

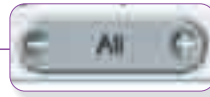


The single-frame display for careful photo selection

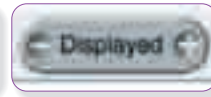


Changes can be made in the middle of an order

Bulk orders are also possible



Bulk orders are also possible



Order all frames

Customize content specifically for your shop

"TS" can be freely customized for your shop operations. It is possible to set up specific services, pricing and other options.

Select from two start screens



Plug-ins allow for flexible expansion

"TS" offers a variety of value-added print services by adding plug-ins, which also support compatibility with new services.



Plug-ins support various services



Photo Book

Spiral Calendar

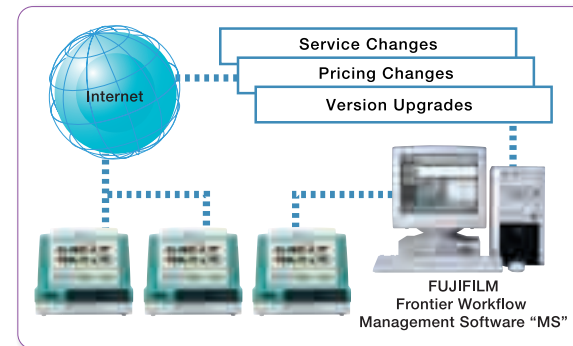
Folded Card

Stained Glass collage

Shuffle Photo

Do maintenance and settings online (planned function)

Configure "TS" to respond to changes in prices and service settings as well as upgrading via the Internet (planned function). And, new services can be quickly supplied over the network. (Requires a center server and "TS" linked to "MS".)



FUJIFILM Frontier Workflow Management Software "MS"



Workflow Management

Collective order management

"MS" collectively processes printing orders and output commands. The software also makes workflow management and preview operation easy, in addition to reducing errors and processing orders quickly.

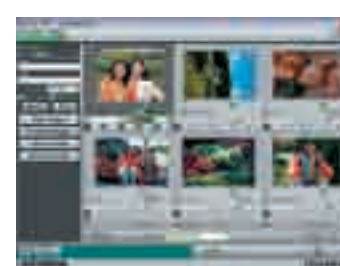
Order management screen



Preview Screen



6-frame preview operation



Enlargement display screen



Value added services

MS easily supports various value-added services, such as framed prints, calendar prints, CD burning, and ID photos.

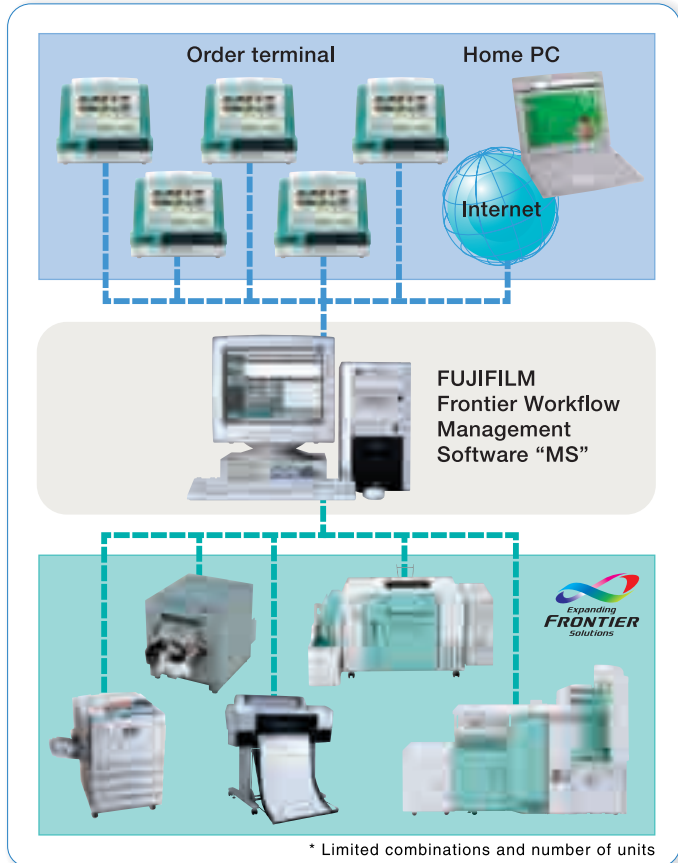


Connect multiple in-store order terminals

"MS" supports a variety of input methods, from connecting multiple in-store order terminals and Kiosks to handling orders via the Internet. In addition, its complete control over order management maintains an efficient operating environment.

Outstanding expandability

"MS" outstanding expandability can handle various output devices, including multiple networked Frontier units as dye diffusion thermal transfer printers and wide format inkjet printers.



* Limited combinations and number of units

FUJIFILM's cutting-edge technology realizes high-quality image processing

Technology

Image Intelligence™

FUJIFILM Frontier Workflow Management Software "MS" employs Fujifilm's proprietary Image Intelligence™ technology to offer an expandable range of image correction features, including gradation adjustment, sharpness enhancement and other image processing functions for digital camera prints. This sophisticated image processing technology makes it easy to provide high-quality print services to satisfy the most demanding customers.



Skin color adjustments and smoothing of skin tones that formerly required manual retouching can be processed easily. These automated image-processing capabilities enable shops to improve productivity and to efficiently provide high value-added prints.

NEW

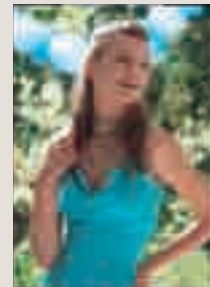
Original image



Skin smoothing

Reproduces skin tones with a smooth, beautiful texture Suitable for portraits and other uses

Original image



Skin color adjustment

Adjusts skin color only without changing the color of clothing or background

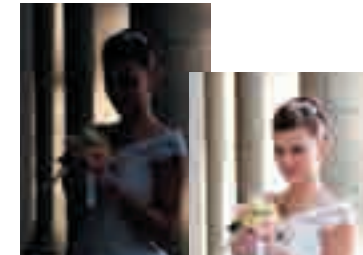
Functions using face detection technology

Face detection technology for automatically picking out a subject's face in the image is used to automate image processing, including gradation adjustment and red eye correction. The technology is also applied to new services, such as cropping and photo layout based on face detection data.

Image processing with face detection technology

Automatic density and white balance adjustment

Original image



Optimized image after image processing

Automatic red eye correction

Original image



Red-eye detection and automatic correction

Services that apply face detection technology

The face area is precisely determined by accurately recognizing the position of the main facial features, such as the eyes. For ID photos and similar products, the correct position and size of the face is automatically adjusted for trimming. Skin color is adjusted at the same time.

ID photo

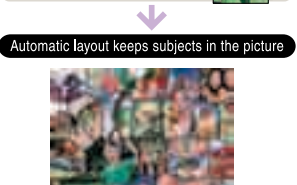
A captured image that is off-center or small



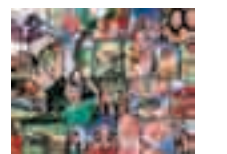
Appropriate image by cropping

Stained Glass collage

A mix of vertical and horizontal images



Automatic layout keeps subjects in the picture



productivity. Provide outstanding customer satisfaction and drive business expansion.

FUJIFILM Digital Minilab Frontier 700 Series

Printers

Seven models available. Choose the best one for your shop.

Compact Models

Can be easily installed in various locations



Photo:LP7100

LP7100 (below photo) is loaded with optional Digital Imaging Controller and 10-/12-order sorters.

iBeam Digital Exposure Engine Approx. **760** prints (4R) per hour

Frontier LP 7000 Digital Printer Processor

Standard equipment: One built-in paper magazine, 3-order sorter

Laser Engine Approx. **810** prints (4R) per hour

Frontier LP 7100 Digital Printer Processor

Standard equipment: Two built-in paper magazines, 3-order sorter

Laser Engine Approx. **1040** prints (4R) per hour

Frontier LP 7200 Digital Printer Processor

Standard equipment: Two built-in paper magazines, 10- or 12-order sorters

Medium-Performance Models

Provide high value-added prints in every shop



Photo:LP7500

Laser Engine Approx. **1180** prints (4R) per hour

Frontier LP 7500 Digital Printer Processor

Standard equipment: Two built-in paper magazines, 14- or 17-order sorters

Laser Engine Approx. **1480** prints (4R) per hour

Frontier LP 7600 Digital Printer Processor

Standard equipment: Two built-in paper magazines, 14- or 17-order sorters

High-Performance Models

Swiftly process large volume orders

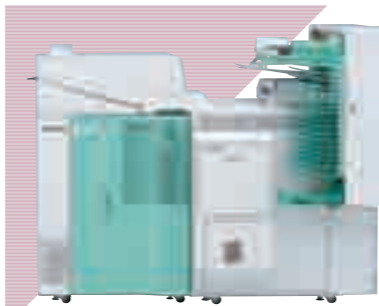


Photo:LP7700

Laser Engine Approx. **2120** prints (4R) per hour

Frontier LP 7700 Digital Printer Processor

Standard equipment: Two built-in paper magazines, 14- or 17-order sorters

Laser Engine Approx. **2360** prints (4R) per hour

Frontier LP 7900 Digital Printer Processor

Standard equipment: Two built-in paper magazines, 14- or 17-order sorters

Film Scanners

High-performance film scanners are available for the Frontier. You can choose the optimum scanner for your shop's business needs.

SP-500

Despite its compact design (0.1m² footprint) and light weight (21kg), it offers superior productivity of 135-film scanning at 211 seconds. This is a compact film scanner specifically for 135-film.

SP-3000

By introducing the automatic film carrier as standard equipment, the SP-3000 can scan both 135 and IX240 film. With the optional carrier, it enables you to scan medium-format film.

Compatible with four/three built-in magazines (factory option)

Up to four built-in paper magazines can be loaded.*Suitable for print orders with various sizes as well as large orders of a uniform size. Supports efficient print production by minimizing the number of times necessary to change the paper magazines.

* Up to three built-in paper magazines can be loaded in the LP 7000/7100/7200.
Up to four built-in paper magazines can be loaded in the LP 7500/7600/7700/7900.



Four built-in paper magazines



Three built-in paper magazines

Fujicolor Crystal Archive Paper

Strongly recommended as the optimum color print paper for the Frontier series, Fujicolor Crystal Archive Paper offers faster results along with superior print quality.

Fujicolor Crystal Archive Paper



CP-49E rapid processing chemical system

Adoption of the CP-49E rapid processing chemical system enables chemicals to be replaced at the touch of a button.

Auto Set-Up

With the auto set-up function, pre-operation work has been streamlined. When temperature control of a processing unit is completed at a pre-programmed time, Frontier automatically generates a calibration printout, transmits the data to the densitometer, and implements necessary measurements and adjustments. Also, by using the automatic control strips running check unit (optional), it can automatically process a control strip.



Built-in densitometer



Automatic control strips running check unit (optional)

iBeam Digital Exposure Engine

The newly developed iBeam Digital Exposure Engine prints high-quality, vivid images at a high resolution of 300 × 300dpi.

LP7000



Laser Engine

Due to high-resolution output of 300 × 600dpi, high-quality images are printed with life-like color tones.

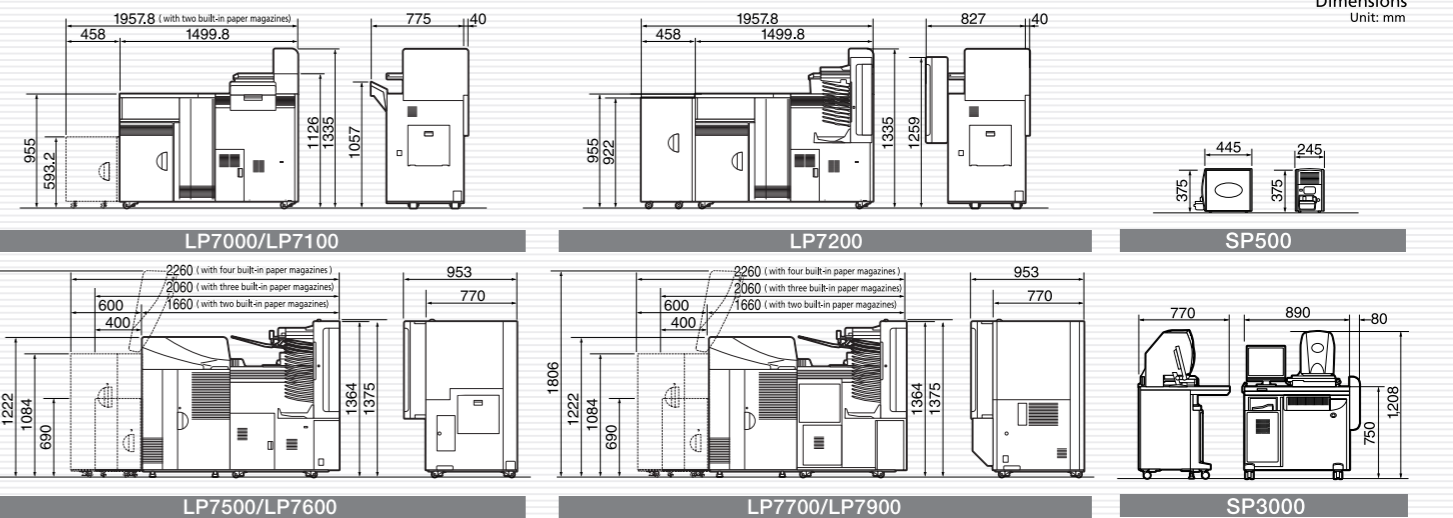
LP7100/7200/7500/7600/7700/7900



Specifications

Processing capacity (actual production)	135 negative film (24-exp.)	Print sizes	Paper widths	LP7000			LP7100			LP7200			LP7500 (LP7EZ + PP7500)			LP7600 (LP7EZ + PP7600)			LP7700 (LP7EZ + PP7700)			LP7900 (LP7EZ + PP7900)							
				Print capacity (Processed by SP-500)									Print capacity (Processed by SP-3000)																
Media print	3R	127mm	Approx. 790 prints/hr									Approx. 1310 prints/hr																	
			Approx. 760 prints/hr									Approx. 1180 prints/hr																	
	4R	152mm	Approx. 800 prints/hr									Approx. 1480 prints/hr																	
			Approx. 810 prints/hr									Approx. 1480 prints/hr																	
Print size			82.5 × 117mm - 203 × 610mm									82.5 × 117mm - 210 × 610mm (Max. 210 × 914.4mm with option)									82.5 × 117mm - 305 × 914.4mm								
Processing chemicals				Chemical system CP-49E																									
Footprint space				Approx. 1.05m ² Approx. 1.30m ² *1			Approx. 1.29m ² Approx. 1.30m ² *2			Approx. 1.30m ²			Approx. 1.34m ² Approx. 1.62m ² *3 Approx. 1.76m ² *4			Approx. 1.40m ² Approx. 1.69m ² *3 Approx. 1.83m ² *4													
Type				LP7000: Floor type, normal light operation (printer, processor, cutter, sorter in one unit) LP7100-LP7900: Floor type, normal light operation (laser printer, processor, cutter, sorter in one unit)																									
Exposure system				LP7000: Scanning exposure system using iBeam, 300 × 300dpi LP7100-LP7900: Scanning exposure system using RGB laser, 300 × 600dpi																									
Paper magazines				LP7000: One built-in paper magazine (standard), two built-in paper magazines and three built-in paper magazines (factory optional) LP7100,LP7200: Two built-in paper magazines (standard), three built-in paper magazines (factory optional) LP7500-LP7900: Two built-in paper magazines (standard), three built-in paper magazines and four built-in paper magazines (factory optional)																									
Paper				FUJICOLOR Crystal Archive Paper (silver-halide)																									
Paper widths				8.9cm, 10.2cm, 11.7cm, 12.7cm, 15.2cm, 20.3cm			8.9cm, 10.2cm, 11.7cm, 12.7cm, 15.2cm, 20.3cm, 21.0cm			8.9cm, 10.2cm, 11.7cm, 12.7cm, 15.2cm, 20.3cm, 21.0cm, 25.4cm, 27.9cm, 30.5cm																			
Back printing				Double 40-character lines in backside print																									
Printer sorter				3-order sorter (standard), 10-/12-order sorters (optional)			10-order sorter or 12-order sorter (selectable)			14-order sorter or 17-order sorter (selectable)																			
Print condition set-up				LP7000: Automatic calibration by built-in calibrator * Requires iBeam set-up using a flatbed scanner LP7100-LP7900: Automatic calibration by built-in calibrator																									
Processor carriage				Single-line, sheet carriage									Double-line, sheet carriage																
Processing time (Dry to dry)				1 min. 47 sec.									2 min. 7 sec.			1 min. 50 sec.			1 min. 42 sec.			1 min. 29 sec.							
Power requirements				AC 200-240V (50/60Hz) Single-phase 18A, Three-phase three-wire 13A, Three-phase four-wire 9A, Approx. 4.0 KVA									AC 200-240V (50/60Hz) Single-phase 25A, Three-phase three-wire 16A, Three-phase four-wire 11A, Approx. 5.4 KVA			AC 200-240V (50/60Hz) Single-phase 31A, Three-phase three-wire 20A, Three-phase four-wire 14A, Approx. 6.7 KVA													
Dimensions				W1,499.8 × D815 × H1,335mm W1,499.8 × D867 × H1,335mm*1 W1,957.8 × D815 × H1,335mm*5 W1,957.8 × D867 × H1,335mm*6			W1,957.8 × D815 × H1,335mm W1,957.8 × D867 × H1,335mm*2			W1,957.8 × D867 × H1,335mm			W1,660 × D953 × H1,375mm W2,060 × D953 × H1,375mm*3 W2,260 × D953 × H1,375mm*4			W1,660 × D953 × H1,375mm W2,060 × D953 × H1,375mm*3 W2,260 × D953 × H1,375mm*4													
Weight (during actual operation)				Approx. 301.7kg (Approx. 356kg)			Approx. 307.9kg (Approx. 362kg)			Approx. 318.4kg (Approx. 373kg)			Approx. 557.8kg (Approx. 649.3kg)			Approx. 561.5kg (Approx. 651.5kg)			Approx. 572kg (Approx. 665.4kg)			Approx. 570.7kg (Approx. 666.4kg)							

*1 with factory optional two built-in paper magazines or three built-in paper magazines and optional sorter *2 with optional 10-/12-order sorters *3 with factory optional three built-in paper magazines and 14-/17-order sorters
*4 with factory optional four built-in paper magazines and 14-/17-order sorters *5 with factory optional two built-in paper magazines or three built-in paper magazines
*6 with factory optional two built-in paper magazines or three built-in paper magazines, and optional 10-/12-order sorters



Performance varies depending on processing capabilities of the Image Controller. Specifications are subject to change without notice. All brand names or trademarks are property of their respective owners.

Output devices with Frontier quality for a variety of needs

<p>DRY MINILAB Frontier</p> <p>Dry Minilab with a small footprint, high performance, and ease of operation capable of processing 36-inch length prints</p>	<p>Thermal photo printer</p> <p>A dye diffusion thermal transfer printing system with high image quality capable of handling high-speed, retail printing</p>	<p>Wide format inkjet printer</p> <p>"Frontier Quality" realizes extra-wide printing services and other options</p>	<p>Color Laser printer</p> <p>Provides photo book printing services with high image quality for double-sided prints</p>
---	---	--	--