

Q55-3800

**Quality, Efficiency and
a Low Total Cost of Ownership**



Quality

Higher Quality, More Versatility

The QSS-3800 provides both the quality and versatility you need. Your quality-driven customers will be pleased with the print results, and your creative-minded customers will be satisfied with the variety of print services it can provide.

High quality prints with the laser engine

The digital laser engine, developed by Noritsu, produces high quality 300dpi prints. It accurately portrays fine color gradations, resulting in beautiful photos that customers have come to expect from Noritsu products.

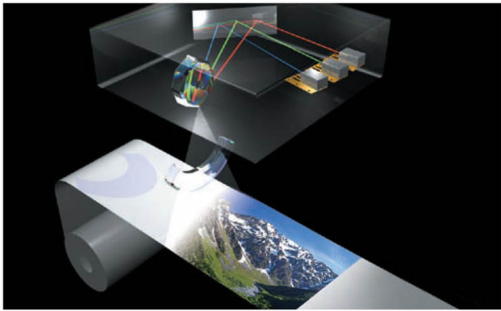
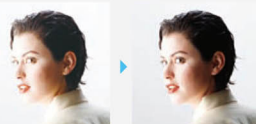


Image optimization & Raw image file processing



Noritsu's image processing technology "AccuSmart" automatically corrects various scenes, applying a wide range of correction tools such as color correction, backlit scene correction, noise reduction, lens aberration correction and red-eye removal. This ingenious technology saves you time and money, and greatly enhances the outcome of the print. Furthermore, with the EZ Controller you can easily process raw images and then apply AccuSmart technology to turn them into ultra high quality prints.

JPEG data



A large portion of the pixel data in the original JPEG image has highlights that are too light. When the image is corrected, the overall light in the image is reduced, but the pixels representing the highlights that were too light are unsalvageable.

RAW data



All gradations are used, producing an image that is balanced well. There are very few pixels with shadows that are too dark and highlights that are too light.

Expanding the range and the value of the services you offer

The QSS-3800 supports enlargements up to 12 inches wide and also supports thin paper that can be used to make an attractive hard cover for albums and photo books. This system will provide new possibilities for your business by enabling you to produce highly profitable value-added products such as collage prints, square photos, design albums, postcards and greeting cards.



Collage Prints



Design Albums



Colorful Albums



Square Photos

More print versatility with thin paper

The QSS-3800 supports thin paper (160 micrometers), giving it an advantage over previous models. This will enable you to provide more value-added products like postcards and photo covers for hard cover albums.



Efficiency

Faster, Easier, More Convenient

The QSS-3800's speed and productivity enable a reduction in costs and an increase in profit, while helping to improve the service you provide to your customers. The operation is smooth and easy, and this system provides an advantage in both initial cost and running costs.

A strong capacity enabling a quick turnaround time

Capacity is a key feature that contributes to prosperous businesses. This minilab can handle sudden large-volume orders while maintaining its high level of print quality. Even orders for large print sizes are fulfilled quickly and easily with the QSS-3800.

6" x 4"
(152 x 102mm)

Approx. **740** prints / hour

5" x 7"
(127 x 180mm)

Approx. **460** prints / hour

10" x 8"
(254 x 203mm)

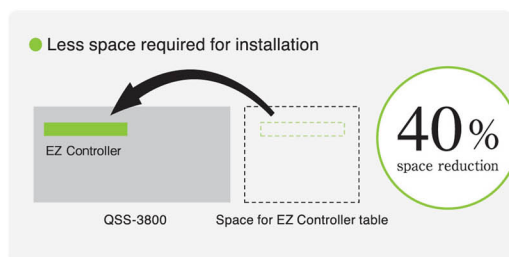
Approx. **420** prints / hour

12" x 10"
(305 x 254mm)

Approx. **350** prints / hour

The QSS-3800's space-saving design provides a more versatile layout

In addition to being compact in size, the top of the QSS-3800 is the same level all the way across, making a wide flat surface on which the EZ Controller can be installed. Not having to place the EZ Controller PC on a separate table enables a configuration that takes up 40% less space than when the EZ Controller is placed on a separate table.



The EZ Controller (sold separately) improves efficiency and reduces costs

The EZ Controller takes care of everything from print order management to color correction of the individual images. It can be installed in networked computers, providing a flexible system in which image editing can be carried out efficiently with multiple computers.



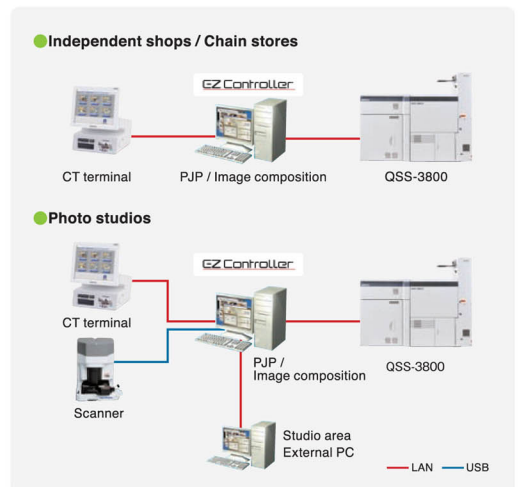
Order screen / PJP screen



Order Controller screen

Can choose a network that is just right for you

Whether you have a small independent shop or a large-scale photo studio you can choose a network that meets your needs.

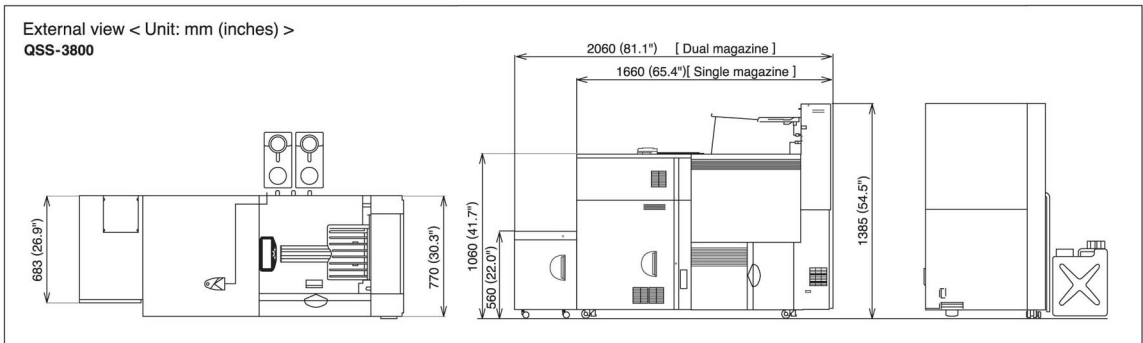


		Specifications
Print sizes	Paper width	82.5, 89, 102, 114, 117, 120, 127, 130, 152, 165, 178, 203, 210, 216, 240, 254, 279, 305mm (3.2, 3.5, 4, 4.5, 4.6, 4.7, 5, 5.1, 6, 6.5, 7, 8, 8.3, 8.5, 9.4, 10, 11, 12 inches)
	Paper advance length	Minimum: 82.5mm Maximum: 457.2mm (18") when the width is 82.5 to 120mm (3.2" to 4.7") / 914.4mm (36") when the width is 127 to 305mm (5" to 12")
Exposure system		Laser exposure system
Print resolution		300dpi x 600dpi
Paper supply		Single magazine system / Dual magazine system *1
Dimensions		see "External View" below
Rated power capacity		AC 200V 1P2W 4.8KVA (24A) (Other specifications available)
Power consumption *2		Approx. 274kwh / month
Weight *3	Printer-Processor	Approx. 453kg

Print size (Width x Advance length)	Estimated processing capacity (prints / hour) *2 *4
127 x 89 mm (5" x 3.5")	Approx. 820
152 x 102 mm (6" x 4")	Approx. 740
127 x 178 mm (5" x 7")	Approx. 460
254 x 203 mm (10" x 8")	Approx. 420
305 x 254 mm (12" x 10")	Approx. 350
305 x 457 mm (12" x 18")	Approx. 200

		Input / Output specifications	
Compatible input media *5	Standard	HDD, CD-ROM, CD-R, CD-RW, DVD-ROM, DVD±R/RW, DVD-RAM	
	Option	Microdrive, CompactFlash, SmartMedia, SD Card, MMC, RS-MMC, Mini SD Card, Memory Stick, Memory Stick Duo, Memory Stick Pro Duo, xD-Picture Card, USB Flash Memory	
	Format	JPEG, Progressive JPEG, Bitmap, PSD, PCX, TGA, Flash Pix, TIFF (RGB uncompressed), HD Photo, RAW, PDF	
Input film *6	Film type	Color negative and positive, B&W negative	
	Size	LS-600/1100	135F, 135H, 135P, 135FP, 135FPS, IX240
		HS-1800	110, 135F, 135H, 135P, 135FP, 135FPS, IX240, 6x4.5, 6x6, 6x7, 6x8, 6x9, 6x12
Film scanning method	Main scanning: Independent line exposure via 3 line CCD Sub scanning: Film movement		
Compatible output media *5	Standard	HDD, CD-R, CD-RW, DVD-RAM	
	Option	DVD-R, Microdrive, CompactFlash, SmartMedia, SD Card, MMC, RS-MMC, Mini SD Card, Memory Stick, Memory Stick Pro, Memory Stick Duo, Memory Stick Pro Duo, xD-Picture Card, USB Flash Memory	
	Format	JPEG, Bitmap, Flash Pix, TIFF (RGB uncompressed)	

*1 Available as an option.
 *2 Calculated according to our criteria. The actual value you achieve may be different.
 *3 Weight does not include chemicals.
 *4 Using 10 megapixel images.
 *5 Depends on the PC, card reader used. Indicates specifications when using the computer system supplied by NK Works.
 *6 When used with film scanner. (sold separately)



NK Works Co., Ltd.

The specifications, information, and appearance of the machine herein are subject to change without notice.



Our products have been manufactured under an ISO 9001-certified quality assurance system.

579-1 UMEHARA, WAKAYAMA-SHI, 640-8550, JAPAN
 PHONE:(81)73-454-0345 FACSIMILE:(81)73-454-0301
<http://www.noritsu.co.jp>

COUNTRY	OFFICE	PHONE NO.
Australia	Noritsu Koki Australia Pty. Ltd.	(61) 2-9317-2141
Brazil	Noritsu Do Brasil Ltda.	(55) 11-3779-0606
Canada	Noritsu Canada Ltd.	(1) 905-567-8982
China	Noritsu (Shanghai) P. E. M. Co., Ltd.	(86) 21-5046-3997
Hong Kong	Noritsu (Far East) Ltd.	(852) 2873-4788
India	Noritsu India Private Ltd.	(91) 11-45757375
Malaysia	Noritsu Koki Malaysia Sdn. Bhd.	(60) 3-78762733

COUNTRY	OFFICE	PHONE NO.
Mexico	Noritsu Mexico S.A. De C.V.	(52) 55-2626-6710
The Philippines	Noritsu Philippines, Inc.	(63) 2-812-8443
South Korea	Noritsu Korea Ltd.	(82) 2-569-2701
Singapore	Noritsu Singapore Pte. Ltd.	(65) 6778-8333
Taiwan	Noritsu Taiwan Co., Ltd.	(886) 2-2508-1908
U. A. E.	Noritsu Near East Branch	(971) 4-8837556
U. S. A.	Noritsu America Corporation	(1) 714-521-9040

NORITSU is a trademark of Noritsu Koki Co., Ltd.
 QSS & AccuSmart™ are trademarks of NK Works Co., Ltd.

All other product and company names herein may be trademarks of their respective owners.